

**HALTON REGION SOURCE PROTECTION AUTHORITY BOARD OF DIRECTORS**

MEETING #: 01 19  
DATE: April 25, 2018  
TIME: 3:00 – 6:00 pm  
PLACE: Halton Region Council Chambers - 1151 Bronte Road, Oakville ON

---

**AGENDA**

Page #

1. **Acceptance of Agenda as distributed**
2. **Disclosure of Pecuniary Interest for Board of Directors**
3. **Consent Items**  
Roll Call & Mileage
- 3.1 Source Protection Program Update 2-8  
Report #: HRSPA 01 19 01
4. **Action Items**
- 4.1 Source Protection Authority Annual Progress Report 2018 9-33  
Report #: HRSPA 01 19 02
- 4.2 Source Protection Committee Member Appointment 34-35  
Report #: HRSPA 01 19 03
5. **Other Business**
6. **Adjournment**

**REPORT TO:** Halton Region Source Protection Authority Board of Directors

**REPORT NO: #** HRSPA 01 19 01

**TO:** Source Protection Authority Board of Directors

**FROM:** Diane L. Bloomfield

**DATE:** April 25, 2019

**SUBJECT:** Source Protection Program Update

---

## MEMO

In 2017 studies were undertaken to define the protection areas for water quality and quantity for the Greensville municipal well field. These studies were necessary due to the addition of a second well to the system. Amendments to the Assessment Report for the Hamilton Region Source Protection Area and to the Source Protection Plan were submitted to the Minister of the Environment, Conservation and Parks in March 2018 for review and approval. On January 30, 2019, Minister Phillips approved the amendment and the revised plan took effect on February 5, 2019.

When the source protection plan was approved by the Ministry of the Environment in 2015, the Minister ordered that we submit a work plan by November 30, 2018 for the review and updating of the source protection plan. On March 11, 2019, the Minister issued an amended order requiring that the source protection committee update the assessment reports and source protection plan to address the work plan items. Our work plan sets out a timeframe of two years to complete the update.

As mentioned previously to the Source Protection Authority, the source protection program is under provincial review. That review continues, however, in a recent proposal on the Ontario Environmental Registry, the province is proposing to define the drinking water source protection program as a mandatory core program of conservation authorities. It appears that the program will be funded in future years through municipal levy.

We have submitted our business plan and budget for the 2019/20 fiscal year and will be signing a Transfer Payment Agreement with the province for this year. The goal of the province is to have Agreements with all source protection program lead conservation authorities in place by the end of April.

Ministry of the Environment,  
Conservation and Parks

Ministère de l'Environnement,  
de la Protection de la nature et des  
Parcs

Office of the Minister

Bureau du ministre

77 Wellesley Street West  
11th Floor, Ferguson Block  
Toronto ON M7A 2T5  
Tel.: 416.314.6790  
Fax: 416.314.6748

77, rue Wellesley Ouest  
11<sup>e</sup> étage, édifice Ferguson  
Toronto (Ontario) M7A 2T5  
Tél. : 416 314-6790  
Télec. : 416 314-6748



357-2018-1703

JAN 30 2019

Mr. Gerry Smallegange  
Chair, Halton Region Source Protection  
Authority  
c/o Conservation Halton  
2596 Britannia Road  
Burlington, ON L7P 0G3

Mr. Doug Conley  
Chair, Hamilton Region Source Protection  
Authority  
c/o Hamilton Conservation Authority  
838 Mineral Springs Road  
Ancaster, ON L9G 4X1

Mr. Robert Edmundson  
Chair, Source Protection Committee  
2071 Deer Run Avenue  
Burlington, ON L7M 2S7

Dear Mr. Smallegange, Mr. Conley and Mr. Edmundson:

It is a pleasure to inform you that the Ministry has completed the review of the amended source protection plan for the Halton and Hamilton Source Protection areas as well as the amended assessment report for the Hamilton Source Protection Area, developed under the *Clean Water Act, 2006*. Pursuant to section 34 of the *Clean Water Act*, I approve the amended plan and assessment report. These amendments will take effect on the day a notice of this decision is posted on the Environmental Registry.


When the initial plan was approved, an order was given under section 36 of the *Clean Water Act* that governs the future review of the plans. The requirements that govern that review remain unchanged with the approval of these amendments.

The ongoing efforts to protect sources of drinking water by the Halton-Hamilton source protection committee, the two source protection authorities, and all stakeholders is appreciated. Thank you for all your dedication and hard work.

With your commitment, significant progress has been made in source protection and the Province looks forward to continuing to work with you and all stakeholders to protect drinking water.

Once again, thank you for your work to protect Ontario's source waters, and please accept my best wishes.

Sincerely,



Rod Phillips  
Minister

c: Diane Bloomfield, Project Manager, Halton-Hamilton Source Protection Region  
Hassaan Basit, Chief Administrative Officer, Conservation Halton  
Lisa Burnside, Chief Administrative Officer, Hamilton Conservation Authority  
Heather Malcolmson, Director, Source Protection Programs Branch, MECP  
Debbie Scanlon, Manager, Source Protection Programs Branch, MECP  
Stacey Baker, Program Analyst, Source Protection Programs Branch, MECP  
Bilal Kidwai, Liaison Officer, Source Protection Programs Branch, MECP

Ministry of the Environment,  
Conservation and Parks

Ministère de l'Environnement,  
de la Protection de la nature et des  
Parcs



Office of the Minister

Bureau du ministre

77 Wellesley Street West  
11th Floor, Ferguson Block  
Toronto ON M7A 2T5  
Tel.: 416.314.6790  
Fax: 416.314.6748

77, rue Wellesley Ouest  
11<sup>e</sup> étage, édifice Ferguson  
Toronto (Ontario) M7A 2T5  
Tél. : 416 314-6790  
Télec. : 416 314-6748

MAR 11 2019

357-2019-196  
CR: ENV1283MC-2012-2366

Mr. Gerry Smallegange, Source Protection Authority Chair (A)  
Conservation Halton  
2596 Britannia Road West  
Burlington, ON L7P 0G3

Ms. Susan Fielding, Source Protection Authority Chair (A)  
Hamilton Conservation Authority  
838 Mineral Springs Road P.O. Box 7099  
Ancaster, ON L9G 3L3

Mr. Robert Edmondson, Chair  
Halton-Hamilton Source Protection Committee  
2071 Deer Run Avenue  
Burlington, ON L7M 2S7

Dear Mr. Smallegange, Ms. Fielding and Mr. Edmondson

I am following up on your proposed workplan for the comprehensive review and update of the Halton Region and Hamilton Region assessment reports and source protection plan for the Halton Region and Hamilton Region source protection areas. The workplan, dated November 22, 2018, was submitted in compliance with the order dated August 5, 2015 issued under section 36 of the *Clean Water Act*.

I am pleased to note that your workplan confirms that implementation of the source protection plan is going well and I appreciate the level of effort you put into your analysis of your assessment reports and plan.

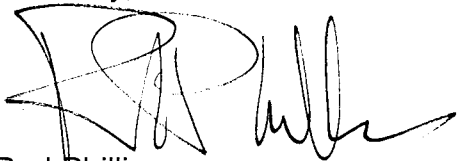
Pursuant to subsection 36 (1) of the *Clean Water Act*, I am amending the order dated August 5, 2015, to establish requirements governing the content and timeframes of the review and the process to be followed for any updates to your assessment reports and plan. The source protection committee shall update the assessment reports and source protection plan to address the workplan items identified in the attachment to this order and ensure those changes comply with the recent amendments to the General Regulation and Director's Technical Rules.

You may proceed with any other items in the workplan that are consistent with the Act, its regulations and technical rules that are in effect at the time of the updates; staff in the Ministry's drinking water source protection program can provide you advice on this. You can contact Debbie Scanlon, Manager Approvals Section (416-212-8839) if you have any questions. I will leave it to the source protection committee and source protection authorities, with the local municipalities, to determine which of these other updates proceed.

When undertaking any updates, the source protection committee and lead source protection authority must follow the amendment process and consultation requirements set out in the attachment to this letter. All updates carried out under section 36 of the *Clean Water Act* are to be submitted to the Ministry within six (6) months after the completion of the required updates and consultation.

I want to thank you for the continued efforts of the source protection authorities, committee and local communities to ensure sources of drinking water are protected. Significant progress has been made in source protection and the province looks forward to continuing to work with you and all stakeholders to protect sources of drinking water.

Sincerely,

A handwritten signature in black ink, appearing to read 'Rod Phillips', with a stylized, cursive script.

Rod Phillips  
Minister

C: Diane Bloomfield, Project Manager, Halton Hamilton Source Protection Region  
Hassaan Basit, CAO Conservation Halton  
Lisa Burnside, CAO Hamilton Conservation Authority  
Judy Love, Administrative Assistant, Hamilton Conservation Authority  
Director, Source Protection Programs Branch, MECP  
Debbie Scanlon, Manager, Source Protection Programs Branch, MECP  
Stacey Baker, Program Analyst, MECP  
Bilal Kidwai, Liaison Officer, MECP

Mandatory Updates to the Assessment Reports and Source Protection Plan

The Halton-Hamilton Region source protection committee shall ensure that the review includes updates to the assessment reports and source protection plan to:

- comply with the amendments made to the Director's Technical Rules, published on the Environmental Registry in March 2017 under posting number 012-8507. In particular for your source protection areas, this includes assessing the vulnerability of the Great Lakes intakes that the workplan indicates are vulnerable (Burlington, Oakville and Woodward) and identifying locations where the above grade handling and storage of fuel poses a risk;
- update liquid hydrocarbon pipeline references in the current assessment reports and plan from a local threat to a prescribed drinking water threat of provincial interest and ensure policies apply to all relevant protection zones to align with 2018 amendments to the General regulation (O.Reg. 287/07) under the *Clean Water Act* and Director's Technical Rules;
- make updates to align with neighboring Source Protection Plans to incorporate the water quantity risk assessment and policies when included in the approved Grand River source protection area for Guelph-Eramosa;
- include technical work completed within the timeframe of the comprehensive review for changes to drinking water systems, including Freelon, Carlisle, Burloak, Campbellville, Cedarvale, Woodward and Walkers Line drinking water systems where appropriate, as necessary under O.Reg 205/18 of the *Safe Drinking Water Act*.
  - The source protection committee, authorities and affected municipality should jointly determine if it would be more appropriate to have the source protection authority propose amendments under section 34 of the *Clean Water Act* to deal with the changes to any drinking water systems, as opposed to including these updates as part of the review under section 36.
- revise policies that support improved implementation, such as policy G-2 for the County of Wellington.

Amendment Process for Updates including Consultation:

The rules that source protection committees and source protection authorities were required to follow under the *Clean Water Act* in preparing, consulting on and submitting assessment reports and source protection plans to the Ministry will generally apply when making updates as part of this review. However, as with locally initiated amendments, any proposed updates to the assessment reports and plan are to be consulted on concurrently and submitted together as one package to the Ministry by the source protection authority.

Only those provisions of the *Clean Water Act* and the General regulation referred to below apply to the update of the assessment reports and source protection plan. For example, as no terms of reference is being required for the review and update of the assessment report and plan, subsection 36 (3) of the *Clean Water Act* does not apply.

Accordingly, for the updates to the assessment reports and source protection plan, the following provisions apply:

- Assessment report content outlined in section 15 of the *Clean Water Act* and sections 11 to 14 of the General regulation.
- Source protection plan content outlined in subsections 22 (2) to (15) of the *Clean Water Act* and sections 20 to 34 of the General regulation.

Updates to the assessment reports and source protection plan shall be made in consultation with affected municipalities, the Ministry, and any other bodies responsible for implementing a policy that may be revised as part of the updates. Consultation shall include the following minimum requirements:

- Early consultation on any draft updates to the assessment reports and plan with the Source Protection Programs Branch prior to carrying out pre-consultation with other bodies.
- Pre-consultation with all implementing bodies as well as persons and businesses engaged in significant drinking water threats in the geographic areas affected by the updates in accordance with sections 35 to 39 of the General regulation.
- Consultation for a minimum of 35 days, as outlined below.

The Explanatory Document that accompanies the plan (section 40, General regulation) shall also be updated to reflect the proposed changes to the plan and made available for consultation.

While consulting on the proposed updates to the assessment reports and source protection plan in accordance with the requirements set out above, comments received shall be documented, considered and addressed prior to advancing to the next consultation stage or finalizing the proposed updates to the assessment reports and plan.

Notification and publication of the proposed updates shall follow the provisions included in the General regulation for assessment reports and plans as described below. This includes making the proposed updates available on the Internet and in locations that are accessible to give the public and other interested parties an opportunity to inspect and comment on the updates. Specifically, consultation on the proposed updates to the assessment reports and plan shall occur concurrently and sections 23 to 25 of the *Clean Water Act* and section 41 of the General regulation apply with modifications noted below:

- References to a draft or proposed source protection plan shall be read as references to the proposed updates to the assessment reports and source protection plan that result from the review carried out under section 36 of the *Clean Water Act*.
- Notices shall be provided to the clerk of each municipality and all other persons and bodies listed in section 41 that are affected by the proposed updates.
- A public meeting referred to in clause (c) of subsection 41 (3) and in subsection 41 (7) is optional as determined by the source protection committee in consideration of the nature and scope of the proposed updates.

**REPORT TO:** Halton Region Source Protection Authority Board of Directors

**REPORT NO: #** HRSPA 01 19 02

**FROM:** Diane Bloomfield, Manager, Source Protection Authority

**DATE:** April 25, 2019

**SUBJECT:** **Source Protection Authority Annual Progress Report 2018**

---

### Recommendation

THAT the Halton Region Source Protection Authority Board of Directors **receives for information the Staff report dated April 25, 2019 outlining the progress made on the implementation of the Source Protection Plan for the Halton Region and Hamilton Region Source Protection Areas;**

THAT the Halton Region Source Protection Authority Board of Directors together with the Hamilton Region Source Protection Authority Board of Directors **approve the submission of the Annual Progress Report on Implementation of the Source Protection Plan to the Ministry of the Environment, Conservation and Parks by May 1, 2019 in the format set out by the Province.**

### Background

The *Clean Water Act, 2006* requires the preparation and implementation of source protection plans to safeguard the quality and quantity of sources of drinking water. The local Halton-Hamilton Source Protection Committee developed a plan, which was approved by the Minister of the Environment and Climate Change and took effect on December 31, 2015.

Our stakeholders, listed as implementing bodies in the policies of the plan, have been working to satisfy the intent of each policy. The policies use various tools, such as education and outreach programs, land use planning initiatives, prescribed instruments, risk management plans, and other strategic measures to meet the objectives of the plans – to protect existing and future drinking water sources and to ensure that existing threat activities cease to be significant and that future activities don't become significant threats.

Implementing bodies submitted their progress reports for this 2018 reporting period and source protection staff compiled their responses into the reporting format as provided by the Ministry (attached). The Province is finalizing an on-line reporting database; however, it isn't quite ready to generate reports. Therefore, the content of the attached report and supplemental form will be uploaded to the provincial database this month. The Source Protection Committee provided their opinion on achieving source protection plan objectives this reporting period for inclusion in the report. They gave an overall score of progressing well for plan implementation and endorsed the attached report content at their meeting held March 19, 2019.

## Report

Implementation of the source protection plan policies has been occurring since December 31, 2015. Over the three-year period, identified significant threats have been verified or removed and in total 84% of the existing significant threats have been managed. This is an increase of 14% in 2018.

To achieve this significant reduction in the risk to drinking water sources that activities pose, policies included in the source protection plan are being implemented. Over the same three-year period, 98% of policies that are legally binding and 88% of non-legally binding policies have been implemented, are in process, or have been considered and did not require action in 2018. These policies are written to manage or prohibit activities on properties that pose a significant threat. In addition to these threat-based policies, the source protection plan also includes some strategic policies that help protect drinking water sources in a more general way. The implementation of these policies is optional but 88% of them have been implemented, are in process, or have been considered and did not require action in 2018.

Policies requiring provincial ministries to review existing approval documents and develop processes for the review of applications for new or amended approvals had a timeframe for implementation of three years from the date the source protection plan took effect. These reviews are now complete and province-wide processes are in effect. When applications are submitted to the province, they are screened to determine if the associated activities are within vulnerable areas where policies could apply. If so, the application then undergoes a detailed review to align terms and conditions of the approvals with source protection plan policies or to prohibit activities when necessary.

An outreach plan was initiated by the source protection committee Chair, Robert Edmondson, in 2018 to help increase awareness of the program locally. In 2018 the Chair and one committee member appeared on the Hamilton Cable 14 City Matters show, spoke to the Rotary Club of Burlington, and met with two members of provincial parliament. This outreach program continued in 2019 with a presentation to the Niagara Escarpment Committee, meetings with another three members of provincial parliament, and a meeting with three Hamilton rural Councillors.

Our municipal partners have established processes to screen planning and building permit applications for source protection follow-up, have completed or are in the process of completing their official plan and zoning by-law conformity exercises to include source protection planning, and are continuing their outreach and education programs.

## Impact on Strategic Goals

This report supports the Metamorphosis strategic theme of Taking care of our growing communities.

## Financial Impact

There is no financial impact to this report.

Signed & respectfully submitted:


Approved for circulation:



Diane Bloomfield  
Manager, Source Water Protection



Hassaan Basit  
CAO/Secretary-Treasurer

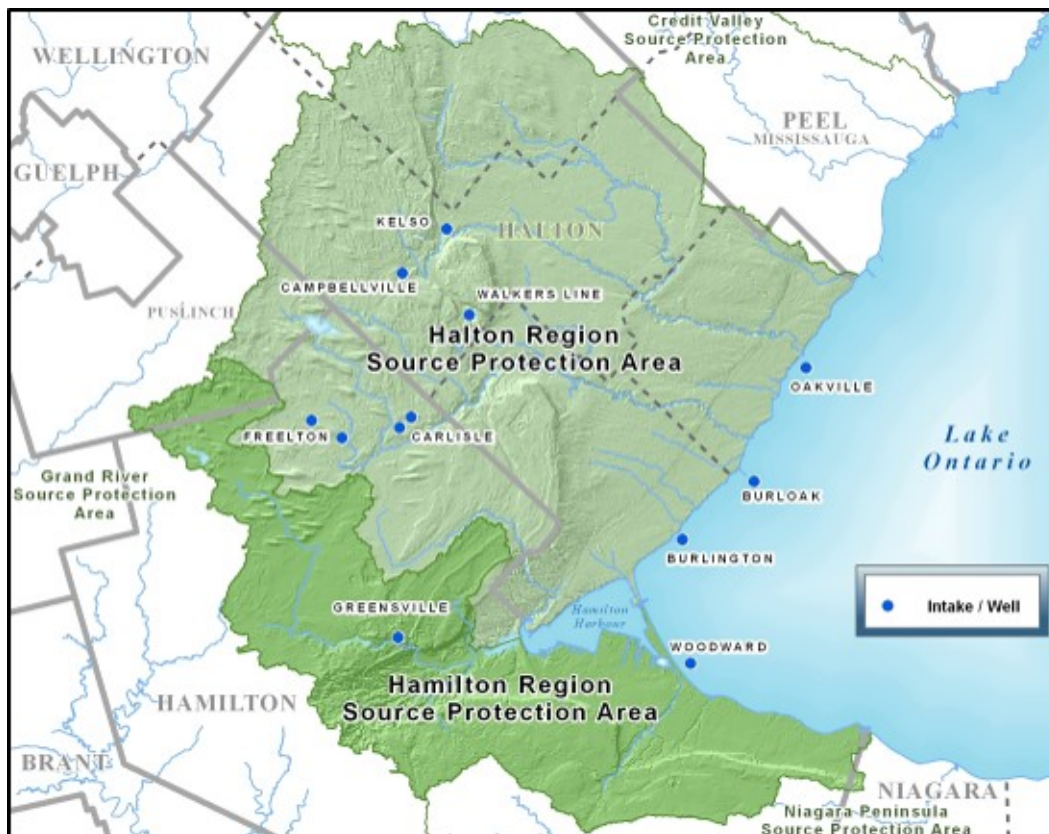


Barb Veale  
Director, Planning and Watershed Management

**FOR QUESTIONS ON CONTENT:** Diane Bloomfield, 905.336.1158 x 2237, [dbloomfield@hrca.on.ca](mailto:dbloomfield@hrca.on.ca)

# Source Protection Annual Progress Report |

## I. Introduction



## II. A message from your local Source Protection Committee

Our progress score on achieving source protection plan objectives this reporting period:

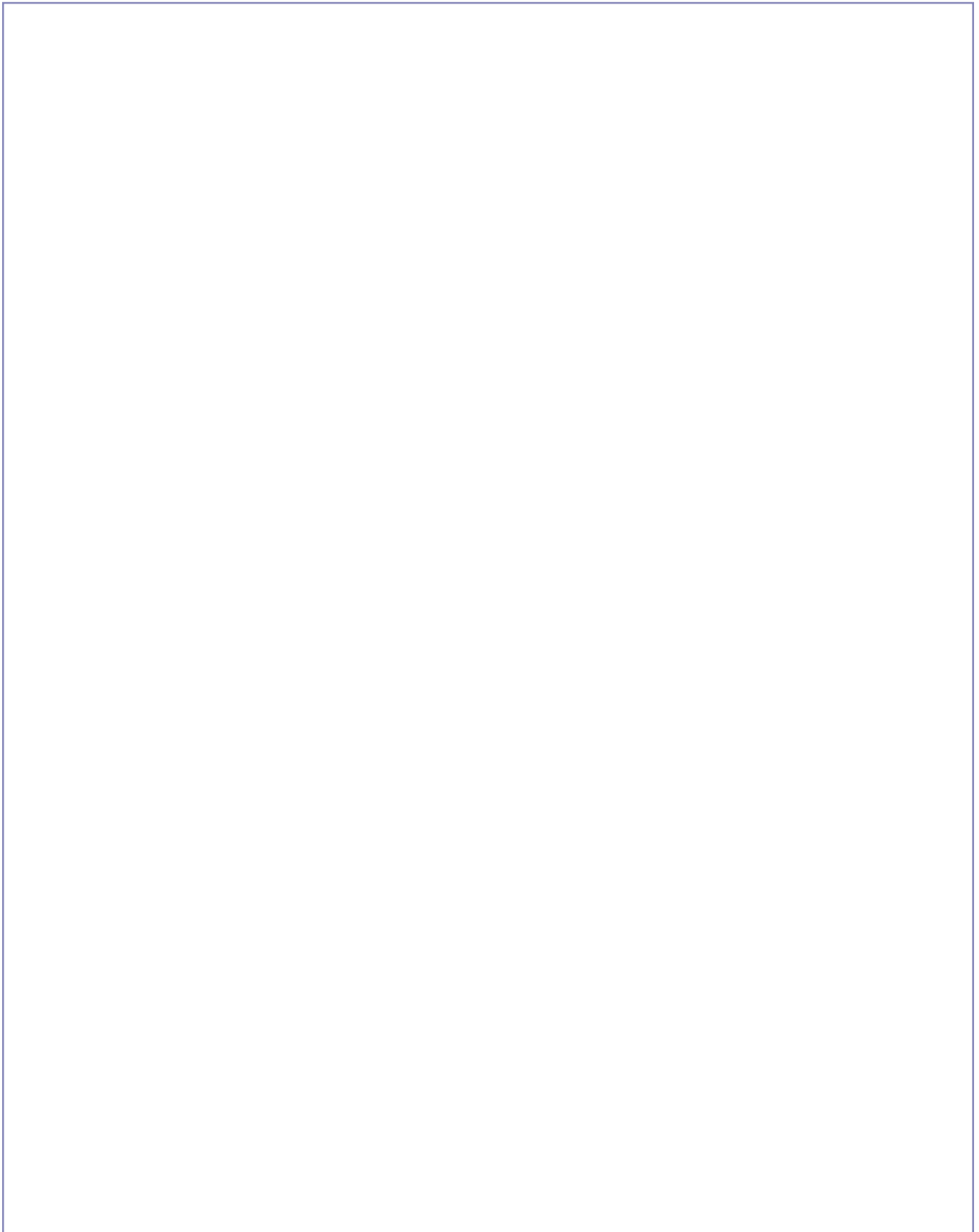
**P : Progressing Well/On Target** – The majority of the source protection plan policies have been implemented and/or are progressing.

**S : Satisfactory** – Some of the source protection plan policies have been implemented and/or are progressing.

**L : Limited progress** – A few of source protection plan policies have been implemented and/or are progressing.

### III. Our Watershed

To learn more, please read our assessment report(s) and source protection plan(s).



## IV. At a Glance: Progress on Source Protection Plan Implementation

### **1. Source Protection Plan Policies**

### **2. Municipal Progress: Addressing Risks on the Ground**

**3. Septic Inspections**

**4. Risk Management Plans**

## 5. Provincial Progress: Addressing Risks on the Ground

## 6. Source Protection Awareness and Change in Behaviour

Outreach programs were initiated in 2018 to improve awareness of people living and working within the Halton-Hamilton Source Protection Region, in addition to the 22 road signs. It is hoped that by increasing awareness of what water sources we use for drinking water, why they need our protection and how we are protecting them, that the decisions and actions of others will change to always consider the protection of drinking water.

A communications plan was developed by the Chair of the source protection committee to expand our outreach aligned with the implementation of the source protection plan. With both provincial and municipal elections held in 2018 an opportunity arose to reach out to elected officials and provide an overview of the local source protection program. An appearance on the Hamilton Cable 14 talk show, City Matters, and a presentation to the Rotary Club of Burlington also helped to reach a broader audience. This outreach continues in 2019.

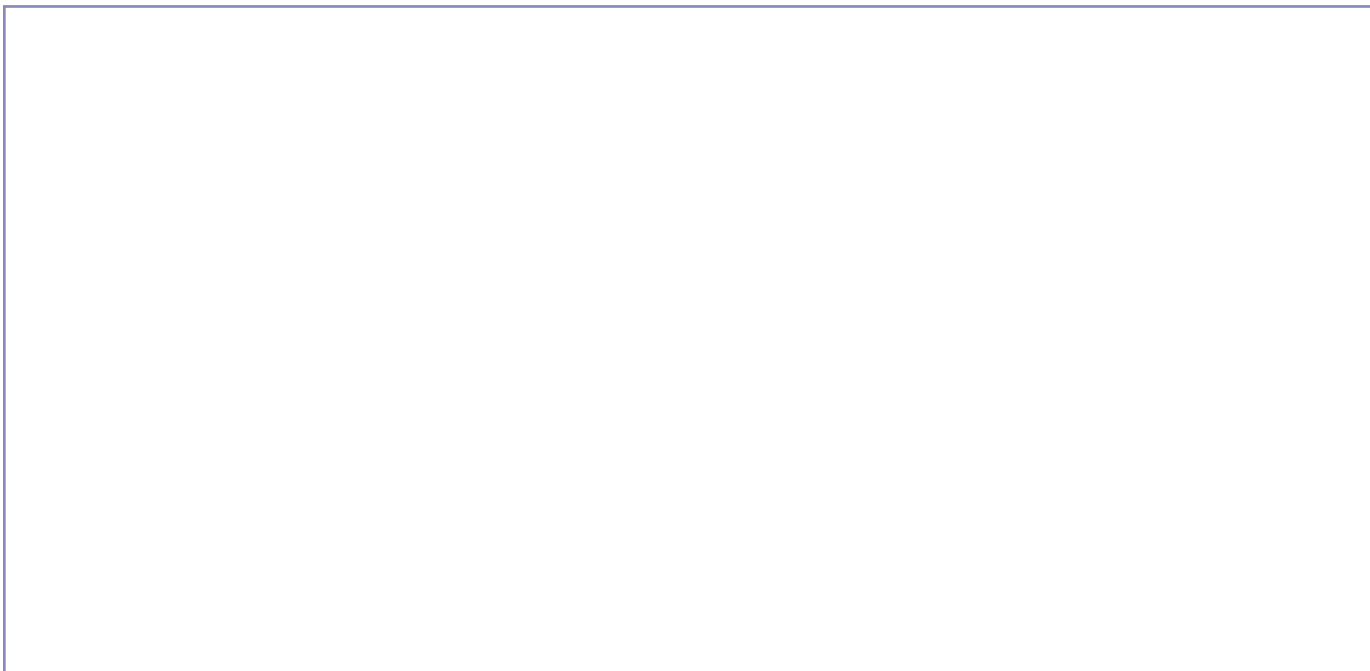
Municipalities are protecting water sources through internal processes. In Hamilton, over 600 development applications were reviewed for locations of stormwater ponds and septic systems and over 40 source protection relevant comments were made on other development applications and permits to take water.

Halton Region and the Township of Puslinch risk management office continue to expand their outreach initiatives through meetings, workshops, and with information kiosks at events/festivals. Halton Region presented their salt management initiatives to attendees of an Ontario Water Works Association workshop and Puslinch offered training to municipal staff and consultants and ran newspaper ads on road salt, water conservation, fertilizer, and who protects our water.

## 7. Source Protection Plan Policies: Summary of Delays

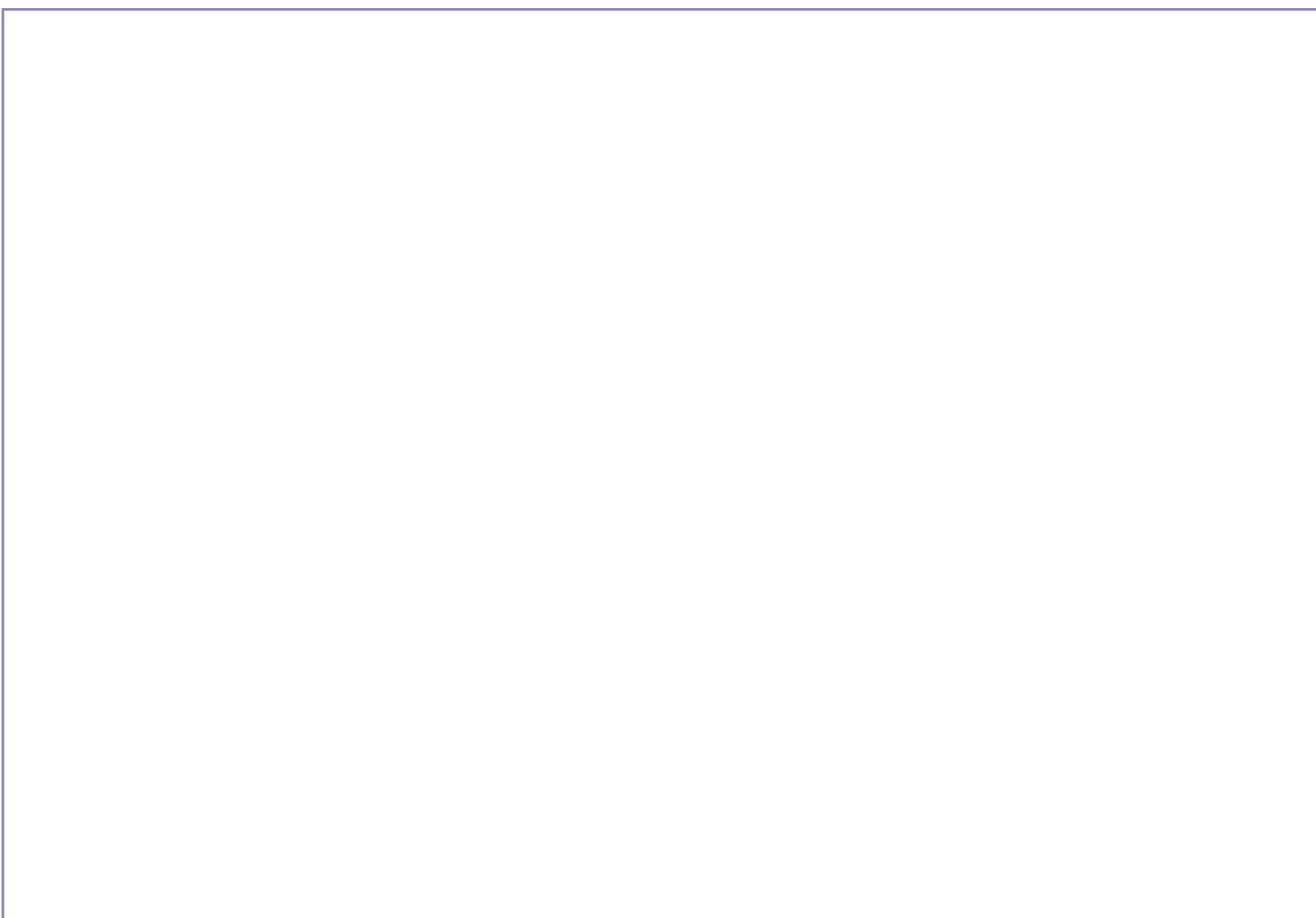
## 8. Source Water Quality: Monitoring and Actions

## 9. Science-based Assessment Reports: Work Plans



## 10. More from the Watershed

To learn more about our source protection region/area, visit our [Homepage](#).



Ministry of Environment, Conservation and Parks, Source Protection Program Branch

# Annual Progress Reporting Supplemental Form for Source Protection

December 22, 2016

UPDATE #1: February 1, 2017 to clarify instructions and reportables

**UPDATE #2: November 2017**

**UPDATE #3: August 2018 (See Appendix A for notes on revisions made to this updated version of the supplemental form)**

Annual Progress Reporting for Source Protection

ACTION REQUIRED	Complete all applicable sections of this electronic annual progress reporting database to report on progress made on the implementation of source protection plan policies in your source protection region/area. <b>NOTE:</b> As a reminder, source protection authorities are <b>not</b> required to complete the columns under “Performance Measures” in the right hand section of this document.					
PURPOSE	<p>This database provides a standardized approach for the sharing of critical information from the source protection authorities on implementation progress. This form will be used to:</p> <ul style="list-style-type: none"><li>Assess plan implementation to demonstrate progress made in protecting sources of drinking water;</li><li>Support a consistent assessment of implementation progress across the province through a predictable, consistent, and reliable manner;</li><li>Contribute to the Minister’s summary on progress made in source protection as required by subsection 46(7) of the <i>Clean Water Act</i> and that is prepared by the ministry under the <i>Safe Drinking Water Act, 2002</i>;</li><li>Support the Ministry of Environment, Conservation and Parks (MECP)’s responses to requests for information from senior management, source protection authorities, stakeholders, and members of the general public;</li><li>Corroborate the MECP’s responses to any related program area audits;</li><li>Validate MECP’s responses to the Environmental Commissioner of Ontario, as requested; and,</li><li>Provide general compliance oversight.</li></ul>					
GUIDANCE	The “Guidance and Rationale: Annual Progress Reporting” has been created to complement the electronic annual reporting database. Source protection authorities are encouraged to consult the guidance document which provides further direction on completing the reportables as well as a rationale for each of the reportables.					
REPORTING PERIOD	For Lake Erie – Grand River, Lake Erie – Long Point, and Saugeen Grey Sauble Northern Bruce Peninsula source protection regions who are submitting their first official annual progress report and supplemental form, the reporting period covers actions taken on source protection plan policies from the effective date of their source protection plans to December 31 <sup>st</sup> of the second calendar year following the year in which their source protection plans take effect. For the other source protection areas/regions who are submitting their second or subsequent annual progress report and supplemental form, the reporting period is the previous calendar year unless otherwise indicated (i.e., when the information is requested on a cumulative basis).					
SUBMISSION DEADLINE	Both the public-facing annual progress report template and the electronic annual progress reporting database are required to be completed by <b>May 1<sup>st</sup></b> of every year for all source protection authorities.					
QUESTIONS	<p>Any questions you may have on completing the form are to be submitted and directed to the following staff at the Source Protection Programs Branch:</p> <table><tr><td><b>Neil Gervais, Senior Drinking Water Program Advisor</b> neil.gervais@ontario.ca</td><td><b>Michael Halder, Research and Planning Analyst</b> michael.halder@ontario.ca</td><td><b>Copy your Liaison Officer (Bilal Kidwai or Olga Yudina)</b> <b><i>and</i></b> send to source.protection@ontario.ca</td></tr></table>			<b>Neil Gervais, Senior Drinking Water Program Advisor</b> neil.gervais@ontario.ca	<b>Michael Halder, Research and Planning Analyst</b> michael.halder@ontario.ca	<b>Copy your Liaison Officer (Bilal Kidwai or Olga Yudina)</b> <b><i>and</i></b> send to source.protection@ontario.ca
<b>Neil Gervais, Senior Drinking Water Program Advisor</b> neil.gervais@ontario.ca	<b>Michael Halder, Research and Planning Analyst</b> michael.halder@ontario.ca	<b>Copy your Liaison Officer (Bilal Kidwai or Olga Yudina)</b> <b><i>and</i></b> send to source.protection@ontario.ca				

Annual Progress Reporting for Source Protection

SOURCE PROTECTION PLAN REGION/AREA	Halton-Hamilton Source Protection Region
REPORTING PERIOD	January 1, 2018 through December 31, 2018
DATE SUBMITTED (dd-mm-year)	by May 1, 2019

Reportable theme	Who <sup>1</sup> compiles this information?	ID	Reportables	Performance Measures			Outcomes <sup>2</sup> (S, M, L)																														
				ID	Measure	Target/Trend																															
Monitoring Policy Implementation	Source Protection Authority	1	<div>List all implementing bodies that did <b><i>not</i></b> submit a status update/annual report to the source protection authority for the previous reporting year and then provide an explanation given, if available, for not submitting a status update/annual report. If you received status updates/reports from all implementing bodies, then simply mark this question ‘complete’.</div> <div><input checked="" type="checkbox"/> Complete</div> <table><thead><tr><th>Name of Implementing Body</th><th>Explanation</th></tr></thead><tbody><tr><td></td><td></td></tr><tr><td></td><td></td></tr><tr><td></td><td></td></tr><tr><td></td><td></td></tr></tbody></table> <div>Reporting Frequency: Ongoing (annually) or on an as needed basis</div>	Name of Implementing Body	Explanation									N/A	N/A	N/A	N/A																				
Name of Implementing Body	Explanation																																				
Implementation status <sup>3</sup> of source protection plan policies	Source Protection Authority & Source Protection Programs Branch	2a	<div>Complete the tables<sup>4</sup> below to indicate the implementation status of various policies in the source protection plan. <b><i>NOTE:</i></b> The percentages calculated and reported in tables 1 to 3 below should be cumulative percentages (i.e., status of policies since the source protection plan effective date). See Guidance for more details.</div> <div>Table 1a. Implementation status of legally binding policies that address <b><i>significant</i></b> drinking water threat activities.</div> <table><thead><tr><th>Implementation Status Category</th><th>Percentage of Plan Policies</th></tr></thead><tbody><tr><td>Implemented</td><td>51.9</td></tr><tr><td>Policy outcome(s) evaluated; no further action(s) required</td><td>3.7</td></tr><tr><td>In progress/some progress made</td><td>10.5</td></tr><tr><td>No progress made</td><td>1.2</td></tr><tr><td>No information available/no response received</td><td>0</td></tr><tr><td>No response required/not applicable</td><td>0.6</td></tr><tr><td>TOTAL</td><td>67.9</td></tr></tbody></table> <div>Table 1b. Implementation status of non-binding policies that address <b><i>significant</i></b> drinking water threat activities.</div> <table><thead><tr><th>Implementation Status Category</th><th>Percentage of Plan Policies</th></tr></thead><tbody><tr><td>Implemented</td><td>11.1</td></tr><tr><td>Policy outcome(s) evaluated; no further action(s) required</td><td>5.6</td></tr><tr><td>In progress/some progress made</td><td>1.8</td></tr><tr><td>No progress made<sup>11</sup></td><td>2.5</td></tr><tr><td>No information available/no response received</td><td>0.0</td></tr><tr><td>No response required/not applicable</td><td>0.0</td></tr></tbody></table>	Implementation Status Category	Percentage of Plan Policies	Implemented	51.9	Policy outcome(s) evaluated; no further action(s) required	3.7	In progress/some progress made	10.5	No progress made	1.2	No information available/no response received	0	No response required/not applicable	0.6	TOTAL	67.9	Implementation Status Category	Percentage of Plan Policies	Implemented	11.1	Policy outcome(s) evaluated; no further action(s) required	5.6	In progress/some progress made	1.8	No progress made <sup>11</sup>	2.5	No information available/no response received	0.0	No response required/not applicable	0.0	A	Percent of legally binding policies that address significant drinking water threats have been/are being implemented (Table 1a).	100% of legally binding policies that address significant drinking water threats have been/are being implemented.	M (#5, #6) L (#10)
Implementation Status Category	Percentage of Plan Policies																																				
Implemented	51.9																																				
Policy outcome(s) evaluated; no further action(s) required	3.7																																				
In progress/some progress made	10.5																																				
No progress made	1.2																																				
No information available/no response received	0																																				
No response required/not applicable	0.6																																				
TOTAL	67.9																																				
Implementation Status Category	Percentage of Plan Policies																																				
Implemented	11.1																																				
Policy outcome(s) evaluated; no further action(s) required	5.6																																				
In progress/some progress made	1.8																																				
No progress made <sup>11</sup>	2.5																																				
No information available/no response received	0.0																																				
No response required/not applicable	0.0																																				
	B	Percent of policies that address moderate-low drinking water threats have been/are being implemented (Table 2).	Increasing percent of policies that address moderate-low drinking water threats have been/are being implemented.																																		
	C	For reporting by theme/other policies:	For reporting by theme/other policies:																																		

<sup>1</sup> ***NOTE:*** The Source Protection Programs Branch is sometimes listed in the second column to indicate where the Source Protection Programs Branch may facilitate the collection and sharing of information to the source protection authorities on the implementation of policies by provincial ministries.

<sup>2</sup> The anticipated outcomes are denoted with “S” for a short-term outcome, “M” for a medium-term outcome, and “L” for a long-term outcome. The letters S, M, L are followed by a number in brackets that corresponds with the specific program outcome described in the program outcomes document and displayed in the program logic model. Please refer to these documents for more information.

<sup>3</sup> Please refer to the accompanying Guidance document for a detailed description of each of the implementation status categories as used in this form.

<sup>4</sup> In the electronic reporting database, source protection authorities may choose to directly complete the four tables with percentages based on their own calculations or they can choose to complete an optional component in which the implementation status of each policy and each implementing body (if applicable) is indicated. In the case of the latter, once the implementation status is indicated for each and every policy in the applicable source protection plan, the percentages for each of the four tables would be automatically generated based on the implementation statuses indicated for every policy.

Reportable theme	Who <sup>1</sup> compiles this information?	ID	Reportables			Performance Measures			Outcomes <sup>2</sup> (S, M, L)																																			
						ID	Measure	Target/Trend																																				
			<table><tr><td colspan="2">TOTAL</td><td>21.0</td></tr></table> <p><b>Table 2.</b> Implementation status of policies that address <i>moderate-low</i> (any policy tool, any legal effect) drinking water threat activities.</p> <table><tr><th>Implementation Status Category</th><th>Percentage of Plan Policies</th></tr><tr><td>Implemented</td><td></td></tr><tr><td>Policy outcome(s) evaluated; no further action(s) required</td><td></td></tr><tr><td>In progress/some progress made</td><td></td></tr><tr><td>No progress made</td><td></td></tr><tr><td>No information available/no response received</td><td></td></tr><tr><td>No response required/not applicable</td><td></td></tr><tr><td>TOTAL</td><td>0</td></tr></table> <p><b>Table 3.</b> Implementation status of policies (i.e., transport pathway, general education &amp; outreach, some specify action, etc.) <i>not</i> directly associated with addressing specific drinking water threat activities.</p> <table><tr><th>Implementation Status Category</th><th>Percentage of Plan Policies</th></tr><tr><td>Implemented</td><td>5.6</td></tr><tr><td>Policy outcome(s) evaluated; no further action(s) required</td><td>0.6</td></tr><tr><td>In progress/some progress made</td><td>3.1</td></tr><tr><td>No progress made</td><td>0.6</td></tr><tr><td>No information available/no response received</td><td>0.6</td></tr><tr><td>No response required/not applicable</td><td>0.6</td></tr><tr><td>TOTAL</td><td>11.1</td></tr></table> <p><b>COMMENTS</b> (Include any comments below, if needed, to explain any of the data reported in the tables above): Table 2 is blank because moderate-low policies for road salt also address significant threats and are included in Table 1.</p> <p><b>Reporting Frequency:</b> Ongoing (annually) until such time all policies in the source protection plan are considered implemented.</p>			TOTAL		21.0	Implementation Status Category	Percentage of Plan Policies	Implemented		Policy outcome(s) evaluated; no further action(s) required		In progress/some progress made		No progress made		No information available/no response received		No response required/not applicable		TOTAL	0	Implementation Status Category	Percentage of Plan Policies	Implemented	5.6	Policy outcome(s) evaluated; no further action(s) required	0.6	In progress/some progress made	3.1	No progress made	0.6	No information available/no response received	0.6	No response required/not applicable	0.6	TOTAL	11.1		Percent of other policies that have been/are being implemented (Table 3).	Increasing percent of other policies being implemented.	
TOTAL		21.0																																										
Implementation Status Category	Percentage of Plan Policies																																											
Implemented																																												
Policy outcome(s) evaluated; no further action(s) required																																												
In progress/some progress made																																												
No progress made																																												
No information available/no response received																																												
No response required/not applicable																																												
TOTAL	0																																											
Implementation Status Category	Percentage of Plan Policies																																											
Implemented	5.6																																											
Policy outcome(s) evaluated; no further action(s) required	0.6																																											
In progress/some progress made	3.1																																											
No progress made	0.6																																											
No information available/no response received	0.6																																											
No response required/not applicable	0.6																																											
TOTAL	11.1																																											
Implementation status of source protection plan policies (as per O. Reg. 287/07, ss. 52(1), p. 1)	Source Protection Authority & Source Protection Programs Branch	2b	Summarize the reasons for results recorded above as being "No progress made" and/or “No information available/no response received” by the dates specified in your source protection plan for significant drinking water threat activities (Table 1a) and for any moderate/low threat policies that used prescribed instruments and <i>Planning Act</i> tools by completing the table below with the following details. Insert additional rows as needed.																																									
			<table><tr><th>Policy ID</th><th>Implementing Body</th><th>Explanation of why actions were not taken by the person(s) or body(ies)</th><th>Outline next steps to support implementation</th></tr><tr><td>T-20-C b., T-47-C b.</td><td>Halton Region</td><td>Policies require the establishment of risk management plans prior to Dec 31, 2020</td><td>Remind Halton Region of the deadline for implementation</td></tr><tr><td>T-29-S d.</td><td>Agrichemical Warehousing Standards Association</td><td>Haven’t been able to connect with the association as letter has gone unanswered</td><td>Continue to seek relevant contacts to speak with</td></tr><tr><td>T-49-S a.</td><td>De-icing contractors</td><td>Contractors have informed us that they must meet the requirements of their clients and reduce liability even though they know their practices aren’t optimized</td><td>Broaden outreach and target large clients in addition to contractors, however, full implementation is not likely to occur</td></tr><tr><td></td><td></td><td></td><td></td></tr></table> <p><b>Reporting Frequency:</b> Ongoing (annually) or on as needed basis</p>	Policy ID	Implementing Body	Explanation of why actions were not taken by the person(s) or body(ies)	Outline next steps to support implementation	T-20-C b., T-47-C b.	Halton Region	Policies require the establishment of risk management plans prior to Dec 31, 2020	Remind Halton Region of the deadline for implementation	T-29-S d.	Agrichemical Warehousing Standards Association	Haven’t been able to connect with the association as letter has gone unanswered	Continue to seek relevant contacts to speak with	T-49-S a.	De-icing contractors	Contractors have informed us that they must meet the requirements of their clients and reduce liability even though they know their practices aren’t optimized	Broaden outreach and target large clients in addition to contractors, however, full implementation is not likely to occur																									
Policy ID	Implementing Body	Explanation of why actions were not taken by the person(s) or body(ies)	Outline next steps to support implementation																																									
T-20-C b., T-47-C b.	Halton Region	Policies require the establishment of risk management plans prior to Dec 31, 2020	Remind Halton Region of the deadline for implementation																																									
T-29-S d.	Agrichemical Warehousing Standards Association	Haven’t been able to connect with the association as letter has gone unanswered	Continue to seek relevant contacts to speak with																																									
T-49-S a.	De-icing contractors	Contractors have informed us that they must meet the requirements of their clients and reduce liability even though they know their practices aren’t optimized	Broaden outreach and target large clients in addition to contractors, however, full implementation is not likely to occur																																									

Reportable theme	Who <sup>1</sup> compiles this information?	ID	Reportables	Performance Measures			Outcomes <sup>2</sup> (S, M, L)						
				ID	Measure	Target/Trend							
Part IV (Section 57 – Prohibition, Section 58 - Risk Management Plan & Section 59 - Restricted Land Uses)	Source Protection Authority	3a	If applicable to the source protection area/region, complete the table below for risk management plans established. <div><table><tr><td>Total number of risk management plans agreed to/established within the source protection area/region since effective date of the source protection plan (i.e., cumulative total – up to December 31, 2017) (Column A)</td><td>Number of risk management plans agreed to or established within the source protection area/region (for existing and future threats) during the reporting period (i.e., annual total) (Column B)</td><td>Total number of properties (i.e., parcels) with risk management plans agreed to or established since the effective date of the source protection plan (Column C)</td></tr><tr><td>0</td><td>0</td><td>0</td></tr></table></div>	Total number of risk management plans agreed to/established within the source protection area/region since effective date of the source protection plan (i.e., cumulative total – up to December 31, 2017) (Column A)	Number of risk management plans agreed to or established within the source protection area/region (for existing and future threats) during the reporting period (i.e., annual total) (Column B)	Total number of properties (i.e., parcels) with risk management plans agreed to or established since the effective date of the source protection plan (Column C)	0	0	0	D	Total number of risk management plans established since the effective date of the source protection plan.	Increasing over time until all required activities have risk management plans established.	S (#1, #2) M (#5, #6, #7) L (#9, #10)
			Total number of risk management plans agreed to/established within the source protection area/region since effective date of the source protection plan (i.e., cumulative total – up to December 31, 2017) (Column A)	Number of risk management plans agreed to or established within the source protection area/region (for existing and future threats) during the reporting period (i.e., annual total) (Column B)	Total number of properties (i.e., parcels) with risk management plans agreed to or established since the effective date of the source protection plan (Column C)								
			0	0	0								
	E	Total number of properties that are subject to risk management plans since the effective date of the source protection plan.	All properties that are subject to section 58 have risk management plans established.										
	Reporting Frequency: Ongoing (annually)												
	Source Protection Authority	3b	How many <b>existing</b> * significant drinking water threats have been managed through the established risk management plans (* meaning engaged in OR enumerated as existing significant threats)? <div><table><tr><td>Annual count</td><td>0</td></tr><tr><td>Cumulative count</td><td>0</td></tr></table></div>	Annual count	0	Cumulative count	0	N/A	No direct measure, but links with measure “O” associated with Implementation Status and Enumerated Threats: Percent of significant drinking water threats that existed in the area when the source protection plan was approved and that have been addressed (i.e., eliminated or managed).	N/A	N/A		
			Annual count	0									
	Cumulative count	0											
	Reporting Frequency: Ongoing (annually) or until such time all existing (enumerated) threats are managed according to plan policies												
	Source Protection Authority	4	How many section 59 notices were issued in this reporting period for:  (i) activities to which neither a prohibition (section 57) nor a risk management plan (section 58) policy applied, as per ss. 59(2)(a) of the <i>Clean Water Act</i> <u>  17  </u>  (ii) activities to which a risk management plan (section 58) policy applied, as per ss. 59(2)(b) of the <i>Clean Water Act</i> <u>  0  </u>										
Reporting Frequency: Ongoing (annually)													
Source Protection Authority	5	For the purposes of section 61 of O. Reg. 287/07, how many notices and/or copies of prescribed instruments that state the prescribed instrument conforms with the significant drinking water threat policies in the source protection plan (i.e., statement of conformity confirms the instrument holder is exempt from requiring a risk management plan) did the risk management official receive? <u>  0  </u>											
		Reporting Frequency: Ongoing (annually)											
<b>NOTE:</b> The term <b>inspections</b> refer to those conducted under the authority of section 62 of the <i>Clean Water Act</i> , related to an activity to which section 56, 57 or 58 of the <i>Clean Water Act</i> applies. This includes inspections carried out for threat verification purposes. It does not include the delivery of documents such as notices or a signed risk management plan.  The term <b>contravention</b> as used in the context of inspections refers to activities being undertaken that are in violation of sections 57 and 58 of the <i>Clean Water Act</i> relative to the policies noted in the source protection plan.			F	Percent of inspections that show conformity with prohibition and risk management plan policies in an approved source protection plan.	Inspections show 100% conformity with prohibition and risk management plan policies over time.	S (#2) M (#5, #6) L (#9, #10)							
Source Protection Authority	6a	(i) State the total number of inspections (including any follow-up site visits) that were carried out for activities (existing or future) that are prohibited under section 57 of the <i>Clean Water Act</i> for this reporting period <u>  0  </u>  (ii) How many properties (i.e., parcels) had inspections for the purposes of section 57 for this reporting period? <u>  0  </u>											
		Reporting Frequency: Ongoing (annually)											

Reportable theme	Who <sup>1</sup> compiles this information?	ID	Reportables	Performance Measures			Outcomes <sup>2</sup> (S, M, L)	
				ID	Measure	Target/Trend		
	Source Protection Authority	6b	Among these inspections, how many showed that activities were taking place on the landscape even though they were prohibited (i.e., in contravention) under section 57 of the <i>Clean Water Act</i> for this reporting period? <u>  NA  </u>					
			<b>Reporting Frequency:</b> Ongoing (annually)					
	Source Protection Authority	7	How many <b>existing</b> significant drinking water threats have been prohibited as a result of section 57 prohibitions?					
			Annual count					0
			Cumulative count					0
			<b>Reporting Frequency:</b> Ongoing (annually) or until such time all existing (enumerated) threats are prohibited according to plan policies					
	Source Protection Authority	8a	(i) State the total number of inspections (including any follow-up site visits) that were carried out for activities that require a risk management plan under section 58 of the <i>Clean Water Act</i> for this reporting period. <u>  5  </u>					
			(ii) How many properties (i.e., parcels) had inspections for the purposes of section 58 for this reporting period? <u>  3  </u>					
			<b>Reporting Frequency:</b> Ongoing (annually)					
	Source Protection Authority	8b	Among these inspections,					
(i) how many were in contravention with section 58 of the <i>Clean Water Act</i> for this reporting period (i.e., person engaging in a drinking water threat activity without a risk management plan as required by the source protection plan)? <u>  0  </u>								
(ii) how many were in non-compliance with the specific contents of the risk management plan for this reporting period? ( <b>NOTE:</b> Please only include those inspections that showed non-compliance with measures/conditions to manage the actual threat activity.) <u>  0  </u>			G					
		<b>Reporting Frequency:</b> Ongoing (annually)	Percent compliance with the contents of risk management plans.	100% compliance with risk management plans established under section 58 of the <i>Clean Water Act</i> .	S (#2) M (#5, #6) L (#9, #10)			
Source Protection Authority	8c	(i) State the total number of notices issued for cases of contraventions and/or non-compliance with sections 57 or 58 policies for this reporting period.						
		Section 57	0					
		Section 58	0					
		(ii) State the total number of orders issued for contraventions and/or non-compliance found with sections 57 or 58 policies for this reporting period.						
		Section 57	0					
		Section 58	0					
		<b>Reporting Frequency:</b> Ongoing (annually)						
Source Protection Authority	9	<b>[OPTIONAL]:</b> What new/additional knowledge (e.g., threats, transport pathways, abandoned wells, etc. and how they are managed), if any, did the lead source protection authority gain through communication with their Risk Management Official/Risk Management Inspector, based on the Risk Management Official/Risk Management Inspector’s work in the field?  <b>RESPONSE:</b> Risk officials are finding that although an activity is occurring or may occur, the activity does not meet the threshold criteria for a significant threat. Re-inspection reminders are set and discussions take place on voluntary risk management plans and best practices.	N/A	No direct measure. However, this reportable may help to illustrate the value-added knowledge/benefit the Risk Management Officials bring to communities and source protection authorities through their day-to-day work.	N/A	N/A		
		<b>Reporting Frequency:</b> Ongoing (annually)						

**NOTE:** Prescribed instrument reportables (including those related to inspections) from #10 to #20 have been removed from this updated version of the supplemental form to reduce the reporting burden on source protection authorities. Information about actions taken on prescribed instrument policies is available in the various annual reports in the electronic annual reporting database as completed by ministries responsible for issuing prescribed instruments under the following legislation: *Environmental Protection Act* (MECP), *Ontario Water Resources Act* (MECP), *Pesticides Act* (MECP), *Nutrient Management Act* (Ministry of Agriculture, Food and Rural Affairs (OMAFRA)), and *Aggregate Resources Act* (Ministry of Natural Resources and Forestry (MNRF)) and the Ministry of Transportation (MTO)).

Reportable theme	Who <sup>1</sup> compiles this information?	ID	Reportables			Performance Measures			Outcomes <sup>2</sup> (S, M, L)																								
						ID	Measure	Target/Trend																									
Land Use Planning (LUP)	<b><i>NOTE:</i></b> Reportable #21 has been removed from this updated version of the supplemental form to reduce the reporting burden on source protection authorities. Information about actions taken by the Ministry of Municipal Affairs and Housing (MMAH), where it is the planning approval authority for day-to-day <i>Planning Act</i> decisions, is available in the annual report as completed by MMAH in the electronic annual reporting database.																																
	Source Protection Authority	22	List the municipality(ies) (including upper-, lower-, and single-tier) within the source protection region/area that are required to complete Official Plan and Zoning by-law conformity exercises for source protection and then select the status of those exercises in the table below for each municipality. Add as many rows as needed. <b><i>*NOTE:</i></b> <i>Applies to every municipality affected by land use planning or Part IV type policies.</i>	K	Percent of municipalities that are subject to significant drinking water threat policies have incorporated source protection into their official plans.	100% of municipalities that are subject to significant drinking water threat policies have incorporated source protection into their planning documents.	S (#1, #2) M (#4, #5, #6, #7) L (#10)																										
	<table><thead><tr><th>Municipality Name</th><th>Status of Official Plan Conformity Exercise (Select a status from drop down list)</th><th>Status of Zoning By-law Conformity Exercise (Select a status from drop down list)</th></tr></thead><tbody><tr><td>County of Wellington</td><td>Completed</td><td>Choose an item.</td></tr><tr><td>Township of Puslinch</td><td>Choose an item.</td><td>Completed but under appeal</td></tr><tr><td>Hamilton</td><td>Completed</td><td>Completed</td></tr><tr><td>Halton Region</td><td>In Process</td><td>Not Started</td></tr><tr><td>Town of Milton</td><td>In Process</td><td>Not Started</td></tr><tr><td>Town of Halton Hills</td><td>Not Started</td><td>Not Started</td></tr><tr><td>City of Burlington</td><td>In Process</td><td>Not Started</td></tr><tr><td>Town of Oakville</td><td>In Process</td><td>Not Started</td></tr></tbody></table>			Municipality Name	Status of Official Plan Conformity Exercise (Select a status from drop down list)	Status of Zoning By-law Conformity Exercise (Select a status from drop down list)	County of Wellington	Completed	Choose an item.	Township of Puslinch	Choose an item.	Completed but under appeal	Hamilton	Completed	Completed	Halton Region	In Process	Not Started	Town of Milton	In Process	Not Started	Town of Halton Hills	Not Started	Not Started	City of Burlington	In Process	Not Started	Town of Oakville	In Process	Not Started			
Municipality Name	Status of Official Plan Conformity Exercise (Select a status from drop down list)	Status of Zoning By-law Conformity Exercise (Select a status from drop down list)																															
County of Wellington	Completed	Choose an item.																															
Township of Puslinch	Choose an item.	Completed but under appeal																															
Hamilton	Completed	Completed																															
Halton Region	In Process	Not Started																															
Town of Milton	In Process	Not Started																															
Town of Halton Hills	Not Started	Not Started																															
City of Burlington	In Process	Not Started																															
Town of Oakville	In Process	Not Started																															
Reporting Frequency: Ongoing (annually) or until such time all applicable municipalities have completed their conformity exercise																																	
Education & Outreach (E&O)	Source Protection Authority & Source Protection Programs Branch	23a	Indicate the methods by which education and outreach policies have been/are being implemented in the source protection region/area by all the relevant implementing bodies from the checklist below. Choose all that apply.  <input checked="" type="checkbox"/> use of educational materials for general public (e.g., “Source Water Protection - 2018 resources” on Conservation Ontario’s website) <input checked="" type="checkbox"/> use of educational materials for target audiences including developers, builders, landowners, farmers, etc. (e.g., “Source Water Protection - 2018 resources” on Conservation Ontario’s website) <input checked="" type="checkbox"/> workshops <input checked="" type="checkbox"/> site visits <input checked="" type="checkbox"/> source protection content for websites <input checked="" type="checkbox"/> educational videos (e.g., Drinking Water Source Protection video available Conservation Ontario) <input type="checkbox"/> podcasts <input checked="" type="checkbox"/> collaboration with other bodies (e.g., ministries, local organizations, etc.) <input type="checkbox"/> social media promotion (e.g., use of Facebook, Twitter, Instagram, etc.) <input checked="" type="checkbox"/> media advertising (e.g., print media, radio, television) in news media and/or industry/stakeholder specific publications <input checked="" type="checkbox"/> integration with other outreach programs or campaigns (e.g., Community Environment Days, etc.) <input type="checkbox"/> articles in publications <input checked="" type="checkbox"/> information kiosks at events/festivals <input type="checkbox"/> methods for implementing Education and Outreach not yet determined	N/A	N/A	N/A	N/A																										
Reporting Frequency: First 3-5 years of reporting																																	

Reportable theme	Who <sup>1</sup> compiles this information?	ID	Reportables					Performance Measures			Outcomes <sup>2</sup> (S, M, L)																								
	Source Protection Authority	23b	<p>From among the method(s) used to implement education &amp; outreach policies by the source protection authority, specifically, indicate the top one(s) used (please limit the selection of the top methods used to three choices) that were found to be the <b>most successful</b> in meeting the intent of education and outreach policies (i.e., gains in source protection knowledge, behaviour changes and/or commitments to maintain actions that are protective of source water). Then, briefly explain how success was evaluated and any results achieved (e.g., landowners understand they are within or adjacent to a vulnerable area or highly vulnerable aquifer, classroom presentations on protecting water sources made to over 25 schools across source protection region reaching 750 students, farm operators install signs to identify areas to avoid nutrient application, homeowners pledge to properly dispose of hazardous waste products, etc.).</p> <table><thead><tr><th>Method(s) of implementation - Pick up to 3 of the most successful methods used by source protection authority</th><th>Brief explanation of most successful education &amp; outreach method(s) used – evaluation and results achieved (Maximum = 150 words for each response)</th></tr></thead><tbody><tr><td><input type="checkbox"/> use of educational materials for general public (e.g., “Source Water Protection - 2018 resources” on Conservation Ontario’s website)</td><td></td></tr><tr><td><input type="checkbox"/> use of educational materials for target audiences including developers, builders, landowners, farmers, etc. (e.g., “Source Water Protection - 2018 resources” on Conservation Ontario’s website)</td><td></td></tr><tr><td><input checked="" type="checkbox"/> workshops</td><td>possible to engage with the audience in the Q&amp;A period and the presentations are prepared taking into consideration specific areas of interest – about 300 people reached</td></tr><tr><td><input checked="" type="checkbox"/> site visits</td><td>the property owner/ municipal or consulting staff are normally attentive to the message that is being conveyed by municipal staff because of the implications related to their operation</td></tr><tr><td><input type="checkbox"/> source protection content for websites</td><td></td></tr><tr><td><input type="checkbox"/> educational videos (e.g., Drinking Water Source Protection video available Conservation Ontario)</td><td></td></tr><tr><td><input type="checkbox"/> podcasts</td><td></td></tr><tr><td><input checked="" type="checkbox"/> collaboration with other bodies (e.g., ministries, local organizations, etc.)</td><td>Sharing of integrated knowledge reaches a larger audience</td></tr><tr><td><input type="checkbox"/> social media promotion (e.g., use of Facebook, Twitter, Instagram, etc.)</td><td></td></tr><tr><td><input checked="" type="checkbox"/> media advertising (e.g., print media, radio, television) in news media and/or industry/stakeholder specific publications</td><td>Quarterly newspaper ads are successful at reaching residents and directing them to additional information</td></tr><tr><td><input checked="" type="checkbox"/> integration with other outreach programs or campaigns (e.g., Community Environment Days, etc.)</td><td>Integration with children’s groundwater/water festivals reaches thousands of children and their teachers/parents/volunteers</td></tr><tr><td><input type="checkbox"/> articles in publications</td><td></td></tr><tr><td><input checked="" type="checkbox"/> information kiosks at events/festivals</td><td>It is effective to go where residents congregate - 100-500 residents reached</td></tr></tbody></table> <p><b>Reporting Frequency:</b> First 3-5 years of reporting</p>	Method(s) of implementation - Pick up to 3 of the most successful methods used by source protection authority	Brief explanation of most successful education & outreach method(s) used – evaluation and results achieved (Maximum = 150 words for each response)	<input type="checkbox"/> use of educational materials for general public (e.g., “Source Water Protection - 2018 resources” on Conservation Ontario’s website)		<input type="checkbox"/> use of educational materials for target audiences including developers, builders, landowners, farmers, etc. (e.g., “Source Water Protection - 2018 resources” on Conservation Ontario’s website)		<input checked="" type="checkbox"/> workshops	possible to engage with the audience in the Q&A period and the presentations are prepared taking into consideration specific areas of interest – about 300 people reached	<input checked="" type="checkbox"/> site visits	the property owner/ municipal or consulting staff are normally attentive to the message that is being conveyed by municipal staff because of the implications related to their operation	<input type="checkbox"/> source protection content for websites		<input type="checkbox"/> educational videos (e.g., Drinking Water Source Protection video available Conservation Ontario)		<input type="checkbox"/> podcasts		<input checked="" type="checkbox"/> collaboration with other bodies (e.g., ministries, local organizations, etc.)	Sharing of integrated knowledge reaches a larger audience	<input type="checkbox"/> social media promotion (e.g., use of Facebook, Twitter, Instagram, etc.)		<input checked="" type="checkbox"/> media advertising (e.g., print media, radio, television) in news media and/or industry/stakeholder specific publications	Quarterly newspaper ads are successful at reaching residents and directing them to additional information	<input checked="" type="checkbox"/> integration with other outreach programs or campaigns (e.g., Community Environment Days, etc.)	Integration with children’s groundwater/water festivals reaches thousands of children and their teachers/parents/volunteers	<input type="checkbox"/> articles in publications		<input checked="" type="checkbox"/> information kiosks at events/festivals	It is effective to go where residents congregate - 100-500 residents reached				
Method(s) of implementation - Pick up to 3 of the most successful methods used by source protection authority	Brief explanation of most successful education & outreach method(s) used – evaluation and results achieved (Maximum = 150 words for each response)																																		
<input type="checkbox"/> use of educational materials for general public (e.g., “Source Water Protection - 2018 resources” on Conservation Ontario’s website)																																			
<input type="checkbox"/> use of educational materials for target audiences including developers, builders, landowners, farmers, etc. (e.g., “Source Water Protection - 2018 resources” on Conservation Ontario’s website)																																			
<input checked="" type="checkbox"/> workshops	possible to engage with the audience in the Q&A period and the presentations are prepared taking into consideration specific areas of interest – about 300 people reached																																		
<input checked="" type="checkbox"/> site visits	the property owner/ municipal or consulting staff are normally attentive to the message that is being conveyed by municipal staff because of the implications related to their operation																																		
<input type="checkbox"/> source protection content for websites																																			
<input type="checkbox"/> educational videos (e.g., Drinking Water Source Protection video available Conservation Ontario)																																			
<input type="checkbox"/> podcasts																																			
<input checked="" type="checkbox"/> collaboration with other bodies (e.g., ministries, local organizations, etc.)	Sharing of integrated knowledge reaches a larger audience																																		
<input type="checkbox"/> social media promotion (e.g., use of Facebook, Twitter, Instagram, etc.)																																			
<input checked="" type="checkbox"/> media advertising (e.g., print media, radio, television) in news media and/or industry/stakeholder specific publications	Quarterly newspaper ads are successful at reaching residents and directing them to additional information																																		
<input checked="" type="checkbox"/> integration with other outreach programs or campaigns (e.g., Community Environment Days, etc.)	Integration with children’s groundwater/water festivals reaches thousands of children and their teachers/parents/volunteers																																		
<input type="checkbox"/> articles in publications																																			
<input checked="" type="checkbox"/> information kiosks at events/festivals	It is effective to go where residents congregate - 100-500 residents reached																																		
Signage	Source Protection Authority & Source Protection Programs Branch	24	<p>Complete the table below to indicate the number of source water protection signs that have been installed in the source protection region/area for this reporting period (i.e., annual count for the 2018 calendar year) and since the effective date of the source protection plan (i.e., cumulative count up to December 31, 2017).</p> <table><thead><tr><th>Time Period</th><th>Number of signs installed on provincial highways</th><th>Number of signs installed on municipal roads</th><th>Number of signs at other locations (if applicable)</th><th>TOTAL</th></tr></thead></table>	Time Period	Number of signs installed on provincial highways	Number of signs installed on municipal roads	Number of signs at other locations (if applicable)	TOTAL	L	Total number of source water protection signs installed within 5-10 years of plan approval.	Increasing number of source protection signs installed in the first 5-10 years of plan	S (#1, #2) M (#3, #4, #6) L (#8, #9, #10)																							
Time Period	Number of signs installed on provincial highways	Number of signs installed on municipal roads	Number of signs at other locations (if applicable)	TOTAL																															

Reportable theme	Who <sup>1</sup> compiles this information?	ID	Reportables					Performance Measures			Outcomes <sup>2</sup> (S, M, L)																									
								ID	Measure	Target/Trend																										
				Annual	0	1 replacement	0	1 replacement		implementation (on a cumulative basis).																										
				Cumulative	2	20	0	22																												
			Reporting Frequency: First 3-5 years of reporting																																	
Incentives	Source Protection Authority & Source Protection Programs Branch	25	<p>[OPTIONAL] If applicable to the source protection region/area, complete the table below indicating the type of incentive(s) (e.g., prescribed instrument application fees waived, funding, other non-financial incentives, etc.) that was made available (whether as a policy in the source protection plan or not), the source that provided the incentive(s), the prescribed drinking water threat activity(ies) to which it relates, the degree to which the incentive(s) assisted with the implementation of source protection plan policies that address significant drinking water threat activity(ies), and include any comments. Use a single row to describe each type of incentive and insert additional rows if necessary in the table below.</p> <table><tr><th>Type of Incentive</th><th>Source of Incentive (i.e., Municipality, Conservation Authority, Provincial Ministry(ies), Other (please specify))</th><th>Prescribed Drinking Water Threat(s) Addressed</th><th>Degree to which incentive(s) assisted with the implementation of source protection plan policies addressing significant drinking water threats</th><th>Comments</th></tr><tr><td>Well Decommissioning</td><td>Municipal</td><td>Transport Pathways</td><td><input type="checkbox"/> Full degree <input type="checkbox"/> Significant/large degree <input type="checkbox"/> Moderate degree <input type="checkbox"/> Some degree <input checked="" type="checkbox"/> Limited degree</td><td></td></tr><tr><td>Toilet Rebate Program</td><td>Municipal</td><td>Consumptive water use</td><td><input type="checkbox"/> Full degree <input type="checkbox"/> Significant/large degree <input type="checkbox"/> Moderate degree <input checked="" type="checkbox"/> Some degree <input type="checkbox"/> Limited degree</td><td></td></tr><tr><td>Rain barrel sales</td><td>Municipal</td><td>Consumptive water use</td><td><input type="checkbox"/> Full degree <input type="checkbox"/> Significant/large degree <input type="checkbox"/> Moderate degree <input checked="" type="checkbox"/> Some degree <input type="checkbox"/> Limited degree</td><td></td></tr><tr><td>Backflow prevention program</td><td>Municipal</td><td>STP bypasses</td><td><input checked="" type="checkbox"/> Full degree <input type="checkbox"/> Significant/large degree <input type="checkbox"/> Moderate degree <input type="checkbox"/> Some degree <input type="checkbox"/> Limited degree</td><td></td></tr></table>					Type of Incentive	Source of Incentive (i.e., Municipality, Conservation Authority, Provincial Ministry(ies), Other (please specify))	Prescribed Drinking Water Threat(s) Addressed	Degree to which incentive(s) assisted with the implementation of source protection plan policies addressing significant drinking water threats	Comments	Well Decommissioning	Municipal	Transport Pathways	<input type="checkbox"/> Full degree <input type="checkbox"/> Significant/large degree <input type="checkbox"/> Moderate degree <input type="checkbox"/> Some degree <input checked="" type="checkbox"/> Limited degree		Toilet Rebate Program	Municipal	Consumptive water use	<input type="checkbox"/> Full degree <input type="checkbox"/> Significant/large degree <input type="checkbox"/> Moderate degree <input checked="" type="checkbox"/> Some degree <input type="checkbox"/> Limited degree		Rain barrel sales	Municipal	Consumptive water use	<input type="checkbox"/> Full degree <input type="checkbox"/> Significant/large degree <input type="checkbox"/> Moderate degree <input checked="" type="checkbox"/> Some degree <input type="checkbox"/> Limited degree		Backflow prevention program	Municipal	STP bypasses	<input checked="" type="checkbox"/> Full degree <input type="checkbox"/> Significant/large degree <input type="checkbox"/> Moderate degree <input type="checkbox"/> Some degree <input type="checkbox"/> Limited degree		N/A	N/A	N/A	N/A
Type of Incentive	Source of Incentive (i.e., Municipality, Conservation Authority, Provincial Ministry(ies), Other (please specify))	Prescribed Drinking Water Threat(s) Addressed	Degree to which incentive(s) assisted with the implementation of source protection plan policies addressing significant drinking water threats	Comments																																
Well Decommissioning	Municipal	Transport Pathways	<input type="checkbox"/> Full degree <input type="checkbox"/> Significant/large degree <input type="checkbox"/> Moderate degree <input type="checkbox"/> Some degree <input checked="" type="checkbox"/> Limited degree																																	
Toilet Rebate Program	Municipal	Consumptive water use	<input type="checkbox"/> Full degree <input type="checkbox"/> Significant/large degree <input type="checkbox"/> Moderate degree <input checked="" type="checkbox"/> Some degree <input type="checkbox"/> Limited degree																																	
Rain barrel sales	Municipal	Consumptive water use	<input type="checkbox"/> Full degree <input type="checkbox"/> Significant/large degree <input type="checkbox"/> Moderate degree <input checked="" type="checkbox"/> Some degree <input type="checkbox"/> Limited degree																																	
Backflow prevention program	Municipal	STP bypasses	<input checked="" type="checkbox"/> Full degree <input type="checkbox"/> Significant/large degree <input type="checkbox"/> Moderate degree <input type="checkbox"/> Some degree <input type="checkbox"/> Limited degree																																	
			Reporting Frequency: Annually or when warranted																																	
Sewage System Inspections – Ontario Building Code (OBC)	Source Protection Authority	26a	How many on-site sewage systems in the source protection area require inspections in accordance with the Ontario Building Code (i.e., once every five years)? <u>113</u>					M	Percentage of on-site sewage systems that are inspected as part of the mandatory septic inspections program where they are a significant threat.	100% of on-site sewage systems where they are a significant threat are inspected once every 5 years.	S (#2) M (#5, #6) L (#9, #10)																									
	Source Protection Authority	26b	<p>Reporting Frequency: Annual</p> <p>(i) Of these, how many on-site sewage systems (identified as significant drinking water threats) were inspected (i.e., cumulative running tally of systems inspected)? <u>111</u></p> <p>(ii) If not all required on-site sewage systems were inspected, please indicate why they were not all inspected from among the options below:</p> <p><input type="checkbox"/> on-site sewage system(s) is newly constructed and therefore not captured in the first round of inspections</p> <p><input checked="" type="checkbox"/> landowner refused entry, compliance order being sought</p>																																	

Reportable theme	Who <sup>1</sup> compiles this information?	ID	Reportables			Performance Measures			Outcomes <sup>2</sup> (S, M, L)				
						ID	Measure	Target/Trend					
			<input type="checkbox"/> municipality has not yet initiated inspection program										
			Reporting Frequency: Ongoing (annually)										
			How many of the on-site sewage systems inspected required:										
			• minor maintenance work (e.g., pump out, etc.)? <u>109</u> • major maintenance work (e.g., tank replacement, etc.)? <u>2</u>										
Environmental monitoring for drinking water issues	Source Protection Authority	26c	Reporting Frequency: Ongoing (annually)			N	Number of identified issues showing improvements in concentration(s) and/or trend(s).	Improvements over time in the concentration or loadings of contaminant(s)/ issue(s) of concern in sources of drinking water.	S (#1, #2) M (#4, #5, #6, #7) L (#10)				
			If applicable to the source protection region/area, complete the table below. <b>Optional:</b> Describe the actions/behavioural changes in the issue contributing area that might be contributing to the changes.										
			Drinking Water System Number (Column A)	Drinking Water System (Column B)	Drinking Water Issue/Parameter (Column C)	Issue Contributing Area delineated for this issue? (Yes/No) (Column D)	Observations (Column E)	Actions/Behavioural Changes Contributing to Change in Observations (Optional) (Column F)					
			220001655	Georgetown	Chloride	Yes	<input type="checkbox"/> Increasing concentration/trend <input type="checkbox"/> Decreasing concentration/trend <input checked="" type="checkbox"/> No change in concentration/trend <input type="checkbox"/> Not enough data/information is available to determine changes in concentration/trend <input type="checkbox"/> No longer monitoring as issue has improved and is no longer trending upward						
Transport pathways	Source Protection Authority	28a	Reporting Frequency: Ongoing (annually)			N/A	N/A	N/A	N/A				
			How many notices about transport pathways (meaning a condition of land resulting from human activity (e.g., pits and quarries, improperly abandoned wells, geothermal system, etc.) that increases the vulnerability of a raw water supply of a drinking water system) did the source protection authority receive from municipalities in this reporting period (as per O. Reg. 287/07, ss. 27(3))? <u>0</u>										
			Reporting Frequency: Ongoing (annually)										
			Where transport pathway notices were received, indicate the action(s) taken by the source protection region/area in response to receiving these notices:										
	Source Protection Authority	28b	<input type="checkbox"/> Provided information to municipalities about changes in vulnerability <input type="checkbox"/> Provided notice to Source Protection Committee for information <input type="checkbox"/> Situation continues to be monitored										
			Reporting Frequency: Ongoing (annually)										
			[OPTIONAL]: Indicate specific actions taken by any person or body to reduce the impacts that transport pathways could have on sources of drinking water.										
			<input checked="" type="checkbox"/> Funding made available for proper well decommissioning <input type="checkbox"/> Municipality decommissioning wells in accordance with O. Reg. 903 <input type="checkbox"/> Private landowners decommissioning wells in accordance with O. Reg. 903										
		29	Reporting Frequency: Annually or when warranted										

Reportable theme	Who <sup>1</sup> compiles this information?	ID	Reportables	Performance Measures			Outcomes <sup>2</sup> (S, M, L)
				ID	Measure	Target/Trend	
<b>Positive impact examples for each of the following policy tools or topics</b> (e.g., road salt management, transport pathways, spills response, water quantity , Great Lakes, any "other" policy)	Source Protection Authority & Source Protection Programs Branch	30	<i>[<b>OPTIONAL:</b> If and where there are successful examples for each of the following initiatives in the source protection region/area (including from local municipalities, residents and businesses) that the authority wishes to highlight, include its details in the table below. Please limit the descriptions provided (e.g., one example for each topic or more could be included when the source protection authority feels they are exceptional/quite successful).]</i>	N/A	No measure. Could use in public reporting vignettes to highlight successful initiatives.	N/A	N/A
<b>Enumerated threats: progress made in addressing significant threats engaged in at time of source protection plan approval</b> (i.e., enumerated as 'existing')	Source Protection Authority	31a	<b>Reporting Frequency:</b> Annually or when warranted	O	Percent of significant drinking water threats that existed in the area when the source protection plan was approved and that have been addressed (i.e., eliminated or managed).	100% of significant drinking water threats that existed in the area when the source protection plan was approved and that have been addressed (i.e., eliminated or managed).	M (#5, #6) L (#8, #10)
			Complete the table below by first indicating which of the listed significant drinking water threats were being engaged in (i.e., enumerated as ‘existing’ significant threats/threats) at the time of source protection plan approval. Then, using the formula for the running tally of enumerated threats as explained below, complete the columns in the table with the information for each significant drinking water threat indicated as existing in the source protection region/area.  Lead source protection authorities will be maintaining a running tally of progress made in addressing significant threats that were on the ground before plans were approved. See Guidance document for additional details. The running tally consists of the formula: A+B-C-D where: <ul style="list-style-type: none"><li><i>A = Original estimate of significant drinking water threats engaged in/enumerated when source protection plan approved</i></li><li><i>B = Additional significant drinking water threats identified after first source protection plan approved as a result of field verification (i.e., <u>not</u> part of original estimate of significant drinking water threat)</i></li><li><i>C = Significant drinking water threats included in enumeration estimates at time of plan approval but subsequently determined through field verification that: (i) it was <b>not</b> actually engaged in at a particular location after all OR (ii) it was <b>no longer</b> engaged in (e.g., land may still have an agricultural operation but owner no longer applying pesticides for their own reasons)</i></li></ul>				

Reportable theme	Who <sup>1</sup> compiles this information?	ID	Reportables	Performance Measures			Outcomes <sup>2</sup> (S, M, L)																																																																																																																																																																																																			
				ID	Measure	Target/Trend																																																																																																																																																																																																				
			<div><div><div><div>D = Significant drinking water threats addressed because policy is implemented* (*<b>Note:</b> Where multiple policy tools address any given threat sub-category, implemented means that actions associated with at least one policy tool have been completed/are in place.) Source protection authorities may use their local discretion in which policy tool they wish to reflect as being implemented.</div></div></div><table><tr><th>Threat ID</th><th>Prescribed Drinking Water Threat / Local Threat / Conditions</th><th>A</th><th>B</th><th>C</th><th>D</th><th>No. of existing threats still to be addressed (A+B-C-D)</th></tr><tr><td>1</td><td><input type="checkbox"/> The establishment, operation or maintenance of a waste disposal site within the meaning of Part V of the <i>Environmental Protection Act</i>.</td><td>0</td><td>0</td><td>0</td><td>0</td><td>0</td></tr><tr><td>2</td><td><input checked="" type="checkbox"/> The establishment, operation or maintenance of a system that collects, stores, transmits, treats or disposes of sewage.</td><td>136</td><td>0</td><td>3</td><td>131</td><td>2</td></tr><tr><td>3</td><td><input checked="" type="checkbox"/> The application of agricultural source material to land.</td><td>3</td><td>1</td><td>1</td><td>0</td><td>3</td></tr><tr><td>4</td><td><input checked="" type="checkbox"/> The storage of agricultural source material</td><td>3</td><td>1</td><td>1</td><td>0</td><td>3</td></tr><tr><td>5</td><td><input type="checkbox"/> The management of agricultural source material</td><td>0</td><td>0</td><td>0</td><td>0</td><td>0</td></tr><tr><td>6</td><td><input type="checkbox"/> The application of non-agricultural source material to land</td><td>0</td><td>0</td><td>0</td><td>0</td><td>0</td></tr><tr><td>7</td><td><input type="checkbox"/> The handling and storage of non-agricultural source material</td><td>0</td><td>0</td><td>0</td><td>0</td><td>0</td></tr><tr><td>8</td><td><input type="checkbox"/> The application of commercial fertilizer to land</td><td>0</td><td>2</td><td>0</td><td>0</td><td>2</td></tr><tr><td>9</td><td><input type="checkbox"/> The handling and storage of commercial fertilizer</td><td>1</td><td>0</td><td>1</td><td>0</td><td>0</td></tr><tr><td>10</td><td><input checked="" type="checkbox"/> The application of pesticide to land</td><td>5</td><td>1</td><td>2</td><td>0</td><td>4</td></tr><tr><td>11</td><td><input type="checkbox"/> The handling and storage of pesticide</td><td>0</td><td>0</td><td>0</td><td>0</td><td>0</td></tr><tr><td>12</td><td><input checked="" type="checkbox"/> The application of road salt</td><td>5</td><td>0</td><td>0</td><td>5</td><td>0</td></tr><tr><td>13</td><td><input type="checkbox"/> The handling and storage of road salt</td><td>0</td><td>0</td><td>0</td><td>0</td><td>0</td></tr><tr><td>14</td><td><input type="checkbox"/> The storage of snow</td><td>0</td><td>0</td><td>0</td><td>0</td><td>0</td></tr><tr><td>15</td><td><input checked="" type="checkbox"/> The handling and storage of fuel</td><td>18</td><td>3</td><td>9</td><td>3</td><td>9</td></tr><tr><td>16</td><td><input checked="" type="checkbox"/> The handling and storage of a dense non-aqueous phase liquid</td><td>1</td><td>1</td><td>1</td><td>0</td><td>1</td></tr><tr><td>17</td><td><input type="checkbox"/> The handling and storage of an organic solvent</td><td>0</td><td>0</td><td>0</td><td>0</td><td>0</td></tr><tr><td>18</td><td><input type="checkbox"/> The management of runoff that contains chemicals used in the de-icing of aircraft</td><td>0</td><td>0</td><td>0</td><td>0</td><td>0</td></tr><tr><td>19</td><td><input checked="" type="checkbox"/> The use of land as livestock grazing or pasturing land, an outdoor confinement area or a farm-animal yard O. Reg. 385/08, s. 3.</td><td>7</td><td>0</td><td>1</td><td>0</td><td>6</td></tr><tr><td>20</td><td><input type="checkbox"/> Water taking from an aquifer without returning the water to the same aquifer or surface water body</td><td>0</td><td>0</td><td>0</td><td>0</td><td>0</td></tr><tr><td>21</td><td><input type="checkbox"/> Reducing recharge of an aquifer</td><td>0</td><td>0</td><td>0</td><td>0</td><td>0</td></tr><tr><td>22</td><td><input type="checkbox"/> Establishment and operation of a liquid hydrocarbon pipeline</td><td>NA</td><td>NA</td><td>NA</td><td>NA</td><td>NA</td></tr><tr><td></td><td><input checked="" type="checkbox"/> Local threat #1 (if applicable, please specify) <u>hydrocarbon pipelines that cross waterbodies</u></td><td>22</td><td>0</td><td>0</td><td>22</td><td>0</td></tr><tr><td></td><td><input type="checkbox"/> Local threat #2 (if applicable, please specify) _____</td><td></td><td></td><td></td><td></td><td></td></tr><tr><td></td><td><input type="checkbox"/> Local condition #1 (if applicable, please specify) _____</td><td></td><td></td><td></td><td></td><td></td></tr><tr><td></td><td><input type="checkbox"/> Local condition #2 (if applicable, please specify) _____</td><td></td><td></td><td></td><td></td><td></td></tr><tr><td colspan="2">TOTAL</td><td>201</td><td>9</td><td>19</td><td>161</td><td>30</td></tr></table><div>Reporting Frequency: Ongoing (annually)</div></div> <td></td> <td></td> <td></td>	Threat ID	Prescribed Drinking Water Threat / Local Threat / Conditions	A	B	C	D	No. of existing threats still to be addressed (A+B-C-D)	1	<input type="checkbox"/> The establishment, operation or maintenance of a waste disposal site within the meaning of Part V of the <i>Environmental Protection Act</i> .	0	0	0	0	0	2	<input checked="" type="checkbox"/> The establishment, operation or maintenance of a system that collects, stores, transmits, treats or disposes of sewage.	136	0	3	131	2	3	<input checked="" type="checkbox"/> The application of agricultural source material to land.	3	1	1	0	3	4	<input checked="" type="checkbox"/> The storage of agricultural source material	3	1	1	0	3	5	<input type="checkbox"/> The management of agricultural source material	0	0	0	0	0	6	<input type="checkbox"/> The application of non-agricultural source material to land	0	0	0	0	0	7	<input type="checkbox"/> The handling and storage of non-agricultural source material	0	0	0	0	0	8	<input type="checkbox"/> The application of commercial fertilizer to land	0	2	0	0	2	9	<input type="checkbox"/> The handling and storage of commercial fertilizer	1	0	1	0	0	10	<input checked="" type="checkbox"/> The application of pesticide to land	5	1	2	0	4	11	<input type="checkbox"/> The handling and storage of pesticide	0	0	0	0	0	12	<input checked="" type="checkbox"/> The application of road salt	5	0	0	5	0	13	<input type="checkbox"/> The handling and storage of road salt	0	0	0	0	0	14	<input type="checkbox"/> The storage of snow	0	0	0	0	0	15	<input checked="" type="checkbox"/> The handling and storage of fuel	18	3	9	3	9	16	<input checked="" type="checkbox"/> The handling and storage of a dense non-aqueous phase liquid	1	1	1	0	1	17	<input type="checkbox"/> The handling and storage of an organic solvent	0	0	0	0	0	18	<input type="checkbox"/> The management of runoff that contains chemicals used in the de-icing of aircraft	0	0	0	0	0	19	<input checked="" type="checkbox"/> The use of land as livestock grazing or pasturing land, an outdoor confinement area or a farm-animal yard O. Reg. 385/08, s. 3.	7	0	1	0	6	20	<input type="checkbox"/> Water taking from an aquifer without returning the water to the same aquifer or surface water body	0	0	0	0	0	21	<input type="checkbox"/> Reducing recharge of an aquifer	0	0	0	0	0	22	<input type="checkbox"/> Establishment and operation of a liquid hydrocarbon pipeline	NA	NA	NA	NA	NA		<input checked="" type="checkbox"/> Local threat #1 (if applicable, please specify) <u>hydrocarbon pipelines that cross waterbodies</u>	22	0	0	22	0		<input type="checkbox"/> Local threat #2 (if applicable, please specify) _____							<input type="checkbox"/> Local condition #1 (if applicable, please specify) _____							<input type="checkbox"/> Local condition #2 (if applicable, please specify) _____						TOTAL		201	9	19	161	30			
Threat ID	Prescribed Drinking Water Threat / Local Threat / Conditions	A	B	C	D	No. of existing threats still to be addressed (A+B-C-D)																																																																																																																																																																																																				
1	<input type="checkbox"/> The establishment, operation or maintenance of a waste disposal site within the meaning of Part V of the <i>Environmental Protection Act</i> .	0	0	0	0	0																																																																																																																																																																																																				
2	<input checked="" type="checkbox"/> The establishment, operation or maintenance of a system that collects, stores, transmits, treats or disposes of sewage.	136	0	3	131	2																																																																																																																																																																																																				
3	<input checked="" type="checkbox"/> The application of agricultural source material to land.	3	1	1	0	3																																																																																																																																																																																																				
4	<input checked="" type="checkbox"/> The storage of agricultural source material	3	1	1	0	3																																																																																																																																																																																																				
5	<input type="checkbox"/> The management of agricultural source material	0	0	0	0	0																																																																																																																																																																																																				
6	<input type="checkbox"/> The application of non-agricultural source material to land	0	0	0	0	0																																																																																																																																																																																																				
7	<input type="checkbox"/> The handling and storage of non-agricultural source material	0	0	0	0	0																																																																																																																																																																																																				
8	<input type="checkbox"/> The application of commercial fertilizer to land	0	2	0	0	2																																																																																																																																																																																																				
9	<input type="checkbox"/> The handling and storage of commercial fertilizer	1	0	1	0	0																																																																																																																																																																																																				
10	<input checked="" type="checkbox"/> The application of pesticide to land	5	1	2	0	4																																																																																																																																																																																																				
11	<input type="checkbox"/> The handling and storage of pesticide	0	0	0	0	0																																																																																																																																																																																																				
12	<input checked="" type="checkbox"/> The application of road salt	5	0	0	5	0																																																																																																																																																																																																				
13	<input type="checkbox"/> The handling and storage of road salt	0	0	0	0	0																																																																																																																																																																																																				
14	<input type="checkbox"/> The storage of snow	0	0	0	0	0																																																																																																																																																																																																				
15	<input checked="" type="checkbox"/> The handling and storage of fuel	18	3	9	3	9																																																																																																																																																																																																				
16	<input checked="" type="checkbox"/> The handling and storage of a dense non-aqueous phase liquid	1	1	1	0	1																																																																																																																																																																																																				
17	<input type="checkbox"/> The handling and storage of an organic solvent	0	0	0	0	0																																																																																																																																																																																																				
18	<input type="checkbox"/> The management of runoff that contains chemicals used in the de-icing of aircraft	0	0	0	0	0																																																																																																																																																																																																				
19	<input checked="" type="checkbox"/> The use of land as livestock grazing or pasturing land, an outdoor confinement area or a farm-animal yard O. Reg. 385/08, s. 3.	7	0	1	0	6																																																																																																																																																																																																				
20	<input type="checkbox"/> Water taking from an aquifer without returning the water to the same aquifer or surface water body	0	0	0	0	0																																																																																																																																																																																																				
21	<input type="checkbox"/> Reducing recharge of an aquifer	0	0	0	0	0																																																																																																																																																																																																				
22	<input type="checkbox"/> Establishment and operation of a liquid hydrocarbon pipeline	NA	NA	NA	NA	NA																																																																																																																																																																																																				
	<input checked="" type="checkbox"/> Local threat #1 (if applicable, please specify) <u>hydrocarbon pipelines that cross waterbodies</u>	22	0	0	22	0																																																																																																																																																																																																				
	<input type="checkbox"/> Local threat #2 (if applicable, please specify) _____																																																																																																																																																																																																									
	<input type="checkbox"/> Local condition #1 (if applicable, please specify) _____																																																																																																																																																																																																									
	<input type="checkbox"/> Local condition #2 (if applicable, please specify) _____																																																																																																																																																																																																									
TOTAL		201	9	19	161	30																																																																																																																																																																																																				

Reportable theme	Who <sup>1</sup> compiles this information?	ID	Reportables	Performance Measures			Outcomes <sup>2</sup> (S, M, L)						
				ID	Measure	Target/Trend							
	Source Protection Authority	31b	<p>Please provide comments below to explain the overall progress made in addressing these significant threats. Include the <i><b>percentage of overall progress made</b></i> in the comments provided. The percentage of overall progress made in addressing local threats and conditions that are taking place on the landscape is determined by taking the <i><b>total</b></i> number in column D (i.e., significant drinking water threat addressed because policy is implemented) from the table above (reportable #39a) and dividing it into the number that is derived by adding the total numbers in columns A and B and then subtracting this sum total from the total in column C. In other words, overall progress made = D/A+B-C.</p> <p><u><b>COMMENTS:</b></u> Overall progress made is 84%, an increase of 14% in 2018.</p>										
<b>Reporting Frequency:</b> Ongoing (annually)													
Assessment report information gaps (as per ss. 52(1), p. 2 of O. Reg. 287/07)	Source Protection Authority	32	<p>If applicable to the assessment report in your source protection region/area, provide a summary of steps taken to further assess or implement the work plans through amendments carried out under section 34 or section 36 of the <i>Clean Water Act</i> for the following:</p> <table><tr><th>Technical rule #30.1: Water Budget Tier 3</th><th>Technical rule #50.1: GUDI for WHPA-E or F</th><th>Technical rule #116: Issue Contributing Area</th></tr><tr><td>NA</td><td>NA</td><td>NA</td></tr></table>	Technical rule #30.1: Water Budget Tier 3	Technical rule #50.1: GUDI for WHPA-E or F	Technical rule #116: Issue Contributing Area	NA	NA	NA	N/A	N/A	N/A	N/A
Technical rule #30.1: Water Budget Tier 3	Technical rule #50.1: GUDI for WHPA-E or F	Technical rule #116: Issue Contributing Area											
NA	NA	NA											
<b>Reporting Frequency:</b> Annually until all applicable work plans have been implemented.													
Other reporting items (as per ss. 52(1), p. 4 of O. Reg. 287/07)	Source Protection Authority	33	<p>Does the source protection authority have any other item on which it wishes to report? If so, please explain.</p> <p><u><b>RESPONSE:</b></u> The SPC Communication Plan was initiated in 2018 with the Chair and one SPC member appearing on Cable 14 City Matters program to highlight the source protection program and protection of our drinking water sources, presenting to the Rotary Club of Burlington, and meeting with two local MPPs. All participants found the outreach informative and an effective way to improve awareness of the program.</p>	N/A	N/A	N/A	N/A						
<b>Reporting Frequency:</b> Annually when applicable													
Source protection outcomes	Source Protection Authority	34	<p>What positive outcomes (e.g., less water consumption, changes in behaviour, reduction in phosphorus and nitrogen concentrations, less chloride from road salt, reduction in algal blooms, human health protected, etc.), if any, have potentially resulted from the implementation of source protection plan policies? Please describe the outcomes below.</p> <p><u><b>RESPONSE:</b></u> There is an increased awareness of the impacts from the excessive use of road salt. There is improved coordination of knowledge within municipalities to protect drinking water sources and procedures that resulted in over 600 development applications being screened to protect water resources and relevant comments made on PTTW and ECA applications.</p>	P	Percentage of Source Protection Committees indicating that plan implementation may be a contributing factor to positive drinking water outcomes.	Increasing over time.	M (#4, #5, #6) L (#9, #10)						
<b>Reporting Frequency:</b> Ongoing (annually)													
Achievement of source protection plan objectives (as per ss. 46(3) of the <i>Clean Water Act</i> )	Source Protection Authority	35a	<p>In the opinion of the Source Protection Committee, to what extent have the objectives of the source protection plan been achieved in this reporting period?</p> <p><input checked="" type="checkbox"/> Progressing Well/On Target - The majority of the source protection plan policies have been implemented and/or are progressing well <input type="checkbox"/> Satisfactory - Some of the source protection plan policies have been implemented and/or are progressing well <input type="checkbox"/> Limited Progress made - A few of source protection plan policies have been implemented and/or are progressing well</p>	Q	Percentage of Source Protection Committees indicating that the objectives of the source protection plan are progressing well/on target.	Increasing over time.	S (#1, #2) M (#4, #5, #6, #7) L (#9, #10)						
	<b>Reporting Frequency:</b> Ongoing (annually)												
	Source Protection Authority	35b	<p>Please provide comments to explain how the Source Protection Committee arrived at its opinion. Include a summary of any discussions that might have been had amongst the Source Protection Committee members, especially where no consensus was reached.</p> <p><u><b>COMMENTS:</b></u> The SPC was provided draft copies of the Annual Progress Report and the Supplemental Form on March 6 and 8, 2019. They met on March 19, 2019 to discuss plan implementation progress and their response for Part II of the Annual Progress Report. The Chair of the Committee drafted a response and following discussion the members agreed on the final version of the text and the ranking.</p>										

**REPORT TO:** Halton Region Source Protection Authority Board of Directors

**REPORT NO: #** HRSPA 01 19 03

**FROM:** Diane Bloomfield

**DATE:** April 25, 2019

**SUBJECT:** **Source Protection Committee Member Appointments**

---

### Recommendation

THAT the Halton Region Source Protection Authority Board of Directors **appoint Councillor Judi Partridge and Dr. David Rodgers as members of the Halton-Hamilton Source Protection Committee for a term expiring January 2023.**

### Background

The Halton-Hamilton Source Protection Committee includes three members representing municipal interests. Municipal representation on the source protection committee is grouped as:

1. City of Hamilton, Region of Niagara and Town of Grimsby
2. Township of Puslinch and County of Wellington
3. Regions of Halton and Peel, the Cities of Burlington and Mississauga, and the Towns of Oakville, Milton and Halton Hills

The terms of appointment for the first two groups expired following the 2018 municipal election and require the appointment of new members. The member representing the Region of Halton's group is a staff member appointed to the committee in April 2018 for a term expiring January 2023.

### Report

Following the municipal election in fall 2018, staff requested that the municipalities provide their nominees for representation on the Halton-Hamilton Source Protection Committee. Nominations are made by Council resolution.

In 2016, Niagara Region and the Town of Grimsby resolved to have Hamilton's nominee represent their interests. Staff confirmed their continued support for this arrangement. The City of Hamilton has nominated Councillor Judi Partridge. Councillor Partridge has been an active member on the committee since 2010.

The Township of Puslinch has returned Dr. David Rodgers, a citizen of the Township, as their nominee to the committee. County of Wellington staff continue to support this nomination.

Dr. Rodgers was first nominated in 2016 to represent the joint interests of the Township and the County and has been an active member since then.

It is a requirement of the source protection authority to appoint whomever the municipalities nominate if those nominees meet the requirements for appointment as listed in regulation under the *Clean Water Act*. Both municipal nominees meet the requirements.

In accordance with the member turnover process established for the committee and in keeping with the regulatory requirements, the municipal members' appointments will be until January 2023 to align with the election cycle.

### Impact on Strategic Goals

This report supports the Metamorphosis strategic theme of Taking care of our growing communities.

### Financial Impact

There is no financial impact to this report.

Signed & respectfully submitted:

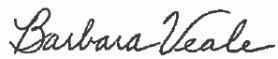


Diane Bloomfield  
Manager, Source Water Protection

Approved for circulation:



Hassaan Basit  
CAO/Secretary-Treasurer



Barb Veale  
Director, Planning and Watershed Management

**FOR QUESTIONS ON CONTENT:** Diane Bloomfield, 905.336.1158 x 2237, [dbloomfield@hrca.on.ca](mailto:dbloomfield@hrca.on.ca)